

Swivel Joint • Type DG-02S

DN 20 - DN 150



Instructions

General technical instructions must be observed. Subject to technical alterations and fluctuations caused by the production process.

Number of revolutions for swivel and rotation movements ≤ 10 rpm.
Swivel movements in several planes see catalogue pages 6 and 7.
Sets of sealings and balls available individually as spare parts.

Application

- **robust design for liquid or gaseous media at high temperatures and particularly high pressures**
- **ideal for loads with high bending moments**
- **for slow swivel and rotation movements through 360°**
- **for rough operating conditions**
 - in hydraulic flow pipes
 - at roll stands
 - in sewage plant
 - in steel mills
 - at hose drums
- **for installation in flexible pipeline systems, for conveying media from a fixed point to any required flexible point**
 - filling systems
 - loading and swivel arms
 - pipe joint shears
- **use at test facilities**
- **special designs suitable for food products**

Swivel Joint

Structure

- stator (outer part) and rotor (inner part) joined by a two-row ball bearing
- for-life lubrication provided in the factory
- welded connection parts: welding ends, pipe bends or flanges

Materials

basic unit	welding end	flange
1.7225	1.0305	1.0460
1.4571	1.4571	1.4571

Standard sealings

- PTFE compound sealings

Special sealings

- additional inner sealing for heavily polluted media
- hermetic radial sealing for underwater applications (from DN 65)
- medium sealings for oxygen, steam and food products

Pressure rating

- PN 16, PN 40 (1.7225) with flanges
- PN 140, PN 250 (1.7225) with welding ends
- PN 16, PN 40 (1.4571) with flanges
- PN 100 (1.4571) with welding ends
- higher pressures possible to max. PN 420

Surface protection

- Gas nitration
- Corrosion-protection primer

Dimensions

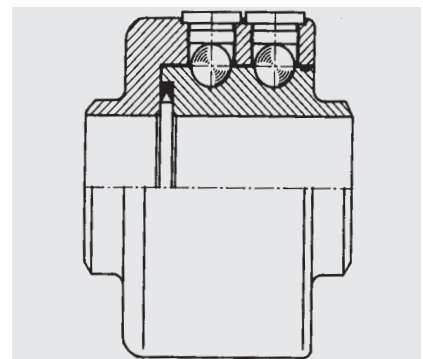
Standard: DN 20 to DN 150

Flanges: PN 16/PN 40 to DIN 2501

Others: possible to ANSI (ASA), BS etc.

Welding end: to ISO recommendations

Design

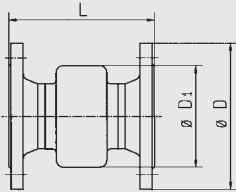


Type DG-02S basic unit
with two-row ball bearing



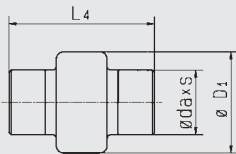
STENFLEX
Swivel Joints
type DG-02S
installed at
loading arms

Form 11 F / flange connection



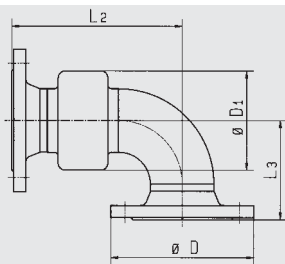
DN	ø D1 mm	1.0460				1.4571			
		PN 16		PN 40		PN 16		PN 40	
		ø D mm	L mm	ø D mm	L mm	ø D mm	L mm	ø D mm	L mm
20	72	105	172	105	176	105	172	105	176
25	78	115	172	115	176	115	172	115	176
32	88	140	176	140	180	140	176	140	180
40	98	150	180	150	186	150	180	150	186
50	118	165	196	165	202	165	196	165	202
65	133	185	206	185	220	185	206	185	220
80	139	200	216	200	232	200	216	200	232
100	175	220	220	235	246	220	220	235	246
125	218	250	256	270	282	250	256	270	282

Form 11 S / welding ends



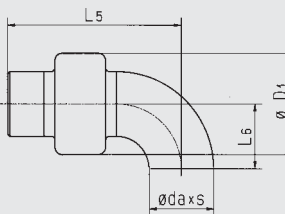
DN	ø D1 mm	ø da mm	1.0305				1.4571	
			PN 140		PN 250		PN 100	
			s mm	L4 mm	s mm	L4 mm	s mm	L4 mm
20	72	26,9	2,9	196	4,0	196	2,3	196
25	78	33,7	3,2	196	4,5	196	2,6	196
32	88	42,4	3,6	196	5,0	196	2,6	196
40	98	48,3	3,6	196	5,0	196	2,6	196
50	118	60,3	4,0	206	5,6	206	2,9	206
65	133	76,1	5,6	216	7,1	216	2,9	216
80	139	88,9	5,6	216	8,0	216	3,2	216
100	175	114,3	6,3	216	8,8	216	3,6	216
125	218	139,7	7,1	246	10,0	246	4,0	246

Form 12 F / flange connection



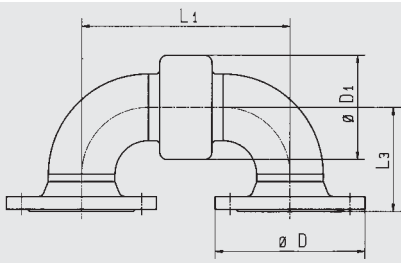
DN	ø D1 mm	1.0460						1.4571					
		PN 16			PN 40			PN 16			PN 40		
		ø D mm	L2 mm	L3 mm	ø D mm	L2 mm	L3 mm	ø D mm	L2 mm	L3 mm	ø D mm	L2 mm	L3 mm
20	72	105	163	70	105	165	72	105	163	70	105	165	72
25	78	115	159	66	115	161	68	115	172	79	115	174	81
32	88	140	168	75	140	170	77	140	184	91	140	186	93
40	98	150	176	83	150	179	86	150	195	102	150	198	105
50	118	165	202	99	165	205	102	165	227	124	165	230	127
65	133	185	225	112	185	232	119	185	256	143	185	263	150
80	139	200	242	129	200	250	137	200	280	167	200	288	175
100	175	220	270	157	235	283	170	220	320	207	235	333	220
125	218	250	328	185	270	341	198	250	391	248	270	404	261

Form 12 S / welding ends



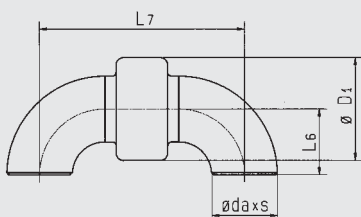
DN	ø D1 mm	ø da mm	1.0305						1.4571		
			PN 140			PN 250			PN 100		
			s mm	L5 mm	L6 mm	s mm	L5 mm	L6 mm	s mm	L5 mm	L6 mm
20	72	26,9	2,9	175	29	4,0	175	29	2,3	175	29
25	78	33,7	3,2	171	25	4,5	171	25	2,6	184	38
32	88	42,4	3,6	178	32	5,0	178	32	2,6	194	48
40	98	48,3	3,6	184	38	5,0	184	38	2,6	203	57
50	118	60,3	4,0	207	51	5,6	207	51	2,9	232	76
65	133	76,1	5,6	230	64	7,1	230	64	2,9	261	95
80	139	88,9	5,6	242	76	8,0	242	76	3,2	280	114
100	175	114,3	6,3	268	102	8,8	268	102	3,6	318	152
125	218	139,7	7,1	323	127	10,0	323	127	4,0	386	190

Form 13 F / flange connection



DN	ø D1 mm	1.0460						1.4571					
		PN 16			PN 40			PN 16			PN 40		
		ø D mm	L1 mm	L3 mm	ø D mm	L1 mm	L3 mm	ø D mm	L1 mm	L3 mm	ø D mm	L1 mm	L3 mm
20	72	105	154	70	105	154	72	105	154	70	105	154	72
25	78	115	146	66	115	146	68	115	172	79	115	172	81
32	88	140	160	75	140	160	77	140	192	91	140	192	93
40	98	150	172	83	150	172	86	150	210	102	150	210	105
50	118	165	208	99	165	208	102	165	258	124	165	258	127
65	133	185	244	112	185	244	119	185	306	143	185	306	150
80	139	200	268	129	200	268	137	200	344	167	200	344	175
100	175	220	320	157	235	320	170	220	420	207	235	420	220
125	218	250	400	185	270	400	198	250	526	248	270	526	261

Form 13 S / welding ends



DN	ø D1 mm	ø da mm	1.0305						1.4571		
			PN 140			PN 250			PN 100		
			s mm	L6 mm	L7 mm	s mm	L6 mm	L7 mm	s mm	L6 mm	L7 mm
20	72	26,9	2,9	29	154	4,0	29	154	2,3	29	154
25	78	33,7	3,2	25	146	4,5	25	146	2,6	38	472
32	88	42,4	3,6	32	160	5,0	32	160	2,6	48	192
40	98	48,3	3,6	38	172	5,0	38	172	2,6	57	210
50	118	60,3	4,0	51	208	5,6	51	208	2,9	76	258
65	133	76,1	5,6	64	244	7,1	64	244	2,9	95	306
80	139	88,9	5,6	76	268	8,0	76	268	3,2	114	344
100	175	114,3	6,3	102	320	8,8	102	320	3,6	152	420
125	218	139,7	7,1	127	400	10,0	127	400	4,0	190	526

Materials data stated for basic units.
Larger sizes up to DN 300 possible on request.