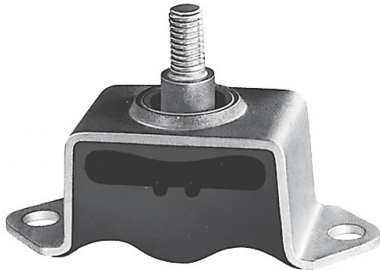


## Rubber-metal element - Type GMD-1, GMD-2

Ceiling element with male or female thread



Type GMD-1

### Applications

- ideal for elastic suspension of appliances and pipes from ceilings and walls
- for damping sound and vibration
- for soft absorption of shock and acceleration force
- safe suspension of parts even under extreme impact stress
- for compressive stress
- for tensile stress

### Structure type GMD-1 / GMD-2

- Type GMD-1 with male threaded bolt vulcanized into the rubber
- Type GMD-2 with female threaded bolt vulcanized into the rubber

### Metal parts

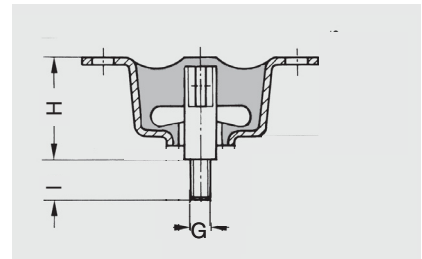
- Material: 1.0038 (S235JR) / 8.8
- Corrosion protection: oiled or electrogalvanized

### Rubber element

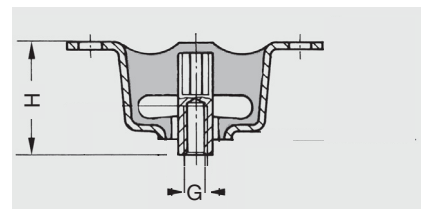
- Very elastic rubber element with safety bar and stopper. Vulcanized U-metal profil.

Rubber grade	Rubber hardness	Possible uses
<b>NBR</b>	<b>hard – 70 Shore A</b> <b>medium – 60 Shore A</b> <b>soft – 45 Shore A</b>	<b>Water, gas, fuel oil, mineral oil</b>

### Versions



**Type GMD-1**  
With male thread



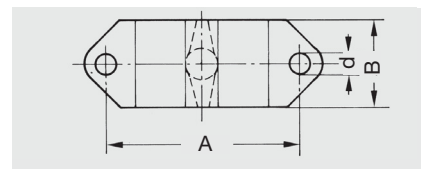
**Type GMD-2**  
With female thread

### Dimensions/stress type GMD-1

A mm	B mm	H mm	I mm	G mm	d mm	Rubber hardness Shore A	Tensile/compressive stress			Art. No.	Pck. qty.
							Spring excursion max. mm	Tol. dynamic load N	Tol. static load N		
72	32	38	15	M 8	8.5	70	9	1500	550	51893500-00	10
72	32	38	15	M 8	8.5	60	9	1000	350	51893600-00	10
72	32	38	15	M 8	8.5	45	9	600	200	51893700-00	10

### Dimensions/stress type GMD-2

A mm	B mm	H mm	I mm	G mm	d mm	Rubber hardness Shore A	Tensile/compressive stress			Art. No.	Pck. qty.
							Spring excursion max. mm	Tol. dynamic load N	Tol. static load N		
72	32	38	15	M 8	8.5	70	9	1500	550	51893800-00	10
72	32	38	15	M 8	8.5	60	9	1000	350	51893900-00	10
72	32	38	15	M 8	8.5	45	9	600	200	51894000-00	10



**Type GMD-1 and GMD-2**  
Top view

### Note

Please comply with general technical instructions. Subject to technical alterations and deviations resulting from the manufacturing process.

The stated tolerable loads are only approximate indications for the static load. Delivery only possible in the stated packaging quantities (far-right column).